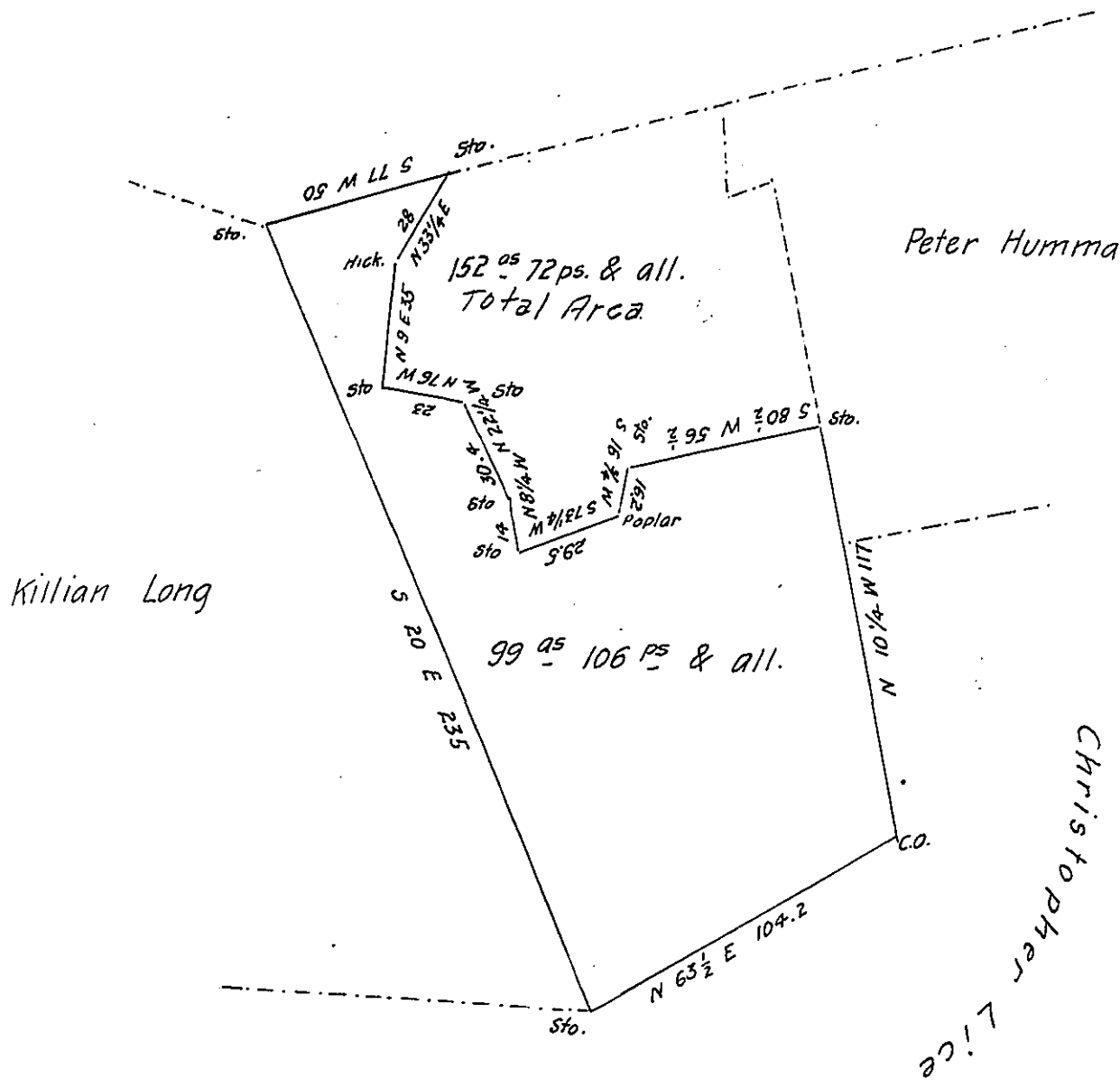


John Hamma



Draft of a Tract of Land Situate in Pine Grove Township in the County of Schuylkill and a part in Dauphin County Containing 99 Acres 106 ps & the allowance of six per cent for Roads &c. Surveyed for Emily T. Eckert & The Philadelphia Trust Safe Deposit & Insurance Company Guardian of Charles M. Eckert Minor Child of George N. Eckert Dec. By C.M. Lewis Esq. at the request of the present County Surveyor on the 21<sup>st</sup> day of August A.D. 1873. It being a part of a larger tract of 152 Acres 72 perches & Allowance Originally surveyed in pursuance of a Warrant granted to Killian Long dated the 16<sup>th</sup> August 1792.

Daniel L. Boyer

To Robert B. Beath Esq.

County Surveyor

Surveyor General of Pennsylvania

IN TESTIMONY that the above is a copy of the original remaining on file in the Department of Internal Affairs of Pennsylvania, made conformably to an Act of Assembly approved the 16th day of February, 1833, I have hereunto set my Hand and caused the Seal of said Department to be affixed at Harrisburg, this fifteenth day of November 1905

*Isaac D. Beatty*  
Secretary of Internal Affairs.